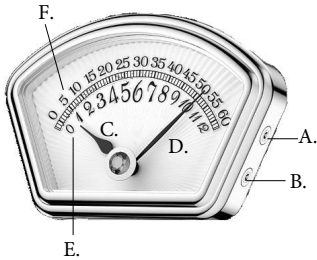


WATCH DISPLAY

TO SET THE TIME



1. Press & hold the hidden button A or B for 3 seconds. The minute hand (part D) will vibrate to indicate the time-setting mode is activated.
2. Use either button A or B to adjust the hands to the desired time. Press button A to move the hands backward, and button B to move them forward.

- A - Backward Push Button
- B - Forward Push Button
- C - Hour Hand
- D - Minute Hand
- E - Hour Marker
- F - Minute Marker

NOTE: If the hands are misaligned after adjustment, see the "RESET HANDS" page to reset them to default.

RESET HANDS

The hour hand (part C) should be at 6 and the minute hand (part D) should be at 30 for the factory default settings.

FACTORY DEFAULT:

Press & hold the button A or B for 10 seconds to reset all hands to the default positions.

HOUR HAND (part C): Press & hold button A for 10 seconds until the hand vibrates. Then, adjust the hour hand to position 6 using either button A or B.

MINUTE HAND (part D): Press & hold button B for 10 seconds until the hand vibrates. Then, adjust the hour hand to position 30 using either button A or B.

Visit us at www.stauer.com to learn more about the fantastic benefits of owning a Stauer Watch!

www.stauer.com

Stauer[®]

Afford the Extraordinary.

Ladies Retrograde Watch

INSTRUCTION MANUAL

