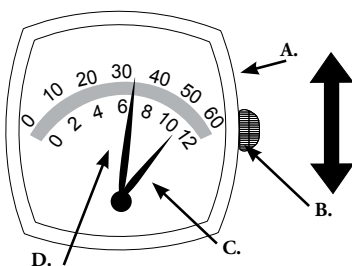


## WATCH DISPLAY



- A - Backward Push Button
- B - Forward Push Button
- C - Hour Hand
- D - Minute Hand

## TIME SETTING

1. Press & hold the hidden button A or B for 3 seconds. The minute hand (part D) will vibrate to indicate the time-setting mode is activated.
2. Use either button A or B to adjust the hands to the desired time. Press button A to move the hands backward, and button B to move them forward.

**NOTE:** If the hands are misaligned after adjustment, see the "RESET HANDS" page to reset them to default.

## RESET HANDS

The hour hand (part C) should be at 6 and the minute hand (part D) should be at 30 for the factory default settings.

**Factory Default:** Press & hold the button A or B for 10 seconds to reset all hands to the default positions.

**Hour Hand** (part C): Press & hold button A for 10 seconds until the hand vibrates. Then, adjust the hour hand to position 6 using either button A or B.

**Minute Hand** (part D): Press & hold button B for 10 seconds until the hand vibrates. Then, adjust the hour hand to position 30 using either button A or B.

Visit us at [www.stauer.com](http://www.stauer.com)  
to learn more about the fantastic  
benefits of owning a Stauer Watch!

[www.stauer.com](http://www.stauer.com)

# Stauer®

Afford the Extraordinary.

INSTRUCTION MANUAL



## SAFETY GUIDE

1. The battery is only replaced at a professional service center, and consumers are not allowed to replace the battery themselves.
2. Remove and immediately recycle or dispose of used batteries according to local regulations and keep away from children. DO NOT dispose of batteries in household trash or incinerate.
3. Even used batteries may cause severe injury or death.
4. Call a local poison control center for treatment information.
5. Battery type: CR1620
6. Nominal voltage: 3V
7. Non-rechargeable batteries are not to be recharged.
8. Do not force discharge, recharge, disassemble. Cannot be heated or incinerated. Doing so may result in injury due to venting, leakage or explosion resulting in chemical burns.
9. Ensure the batteries are installed correctly according to polarity (+ and -).
10. Do not mix old and new batteries, different brands or types of batteries, such as alkaline, carbon-zinc, or rechargeable batteries.
11. Remove and immediately recycle or dispose of batteries from equipment not used for an extended period of time according to local regulations.
12. Always completely secure the battery compartment. If the battery compartment does not close securely, stop using the product, remove the batteries, and keep them away from children.

## ⚠ WARNING

- **INGESTION HAZARD:** This product contains a button cell or coin battery.
- **DEATH** or serious injury can occur if ingested.
- A swallowed button cell or coin battery can cause **Internal Chemical Burns** in as little as **2 hours**.
- **KEEP** new and used batteries **OUT OF REACH of CHILDREN**
- **Seek immediate medical attention** if a battery is suspected to be swallowed or inserted inside any part of the body.

